

# COVINGTON HOMES



MEDITERRANEAN *elevation A*



SPANISH *elevation B*



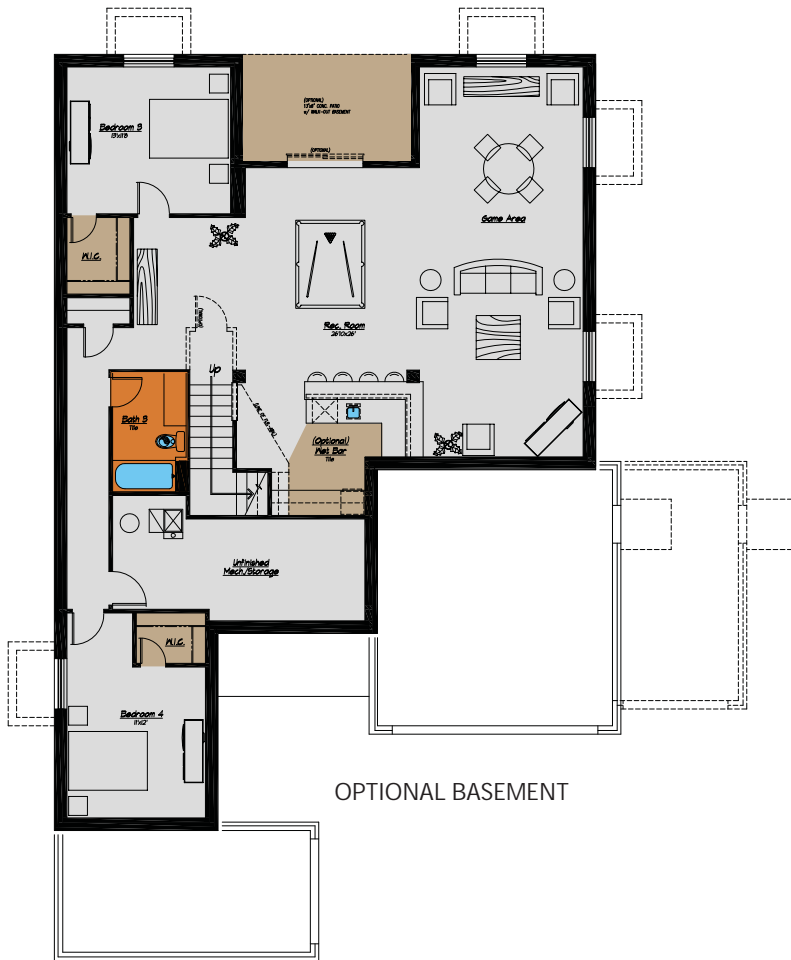
RUSTIC MOUNTAIN *elevation C*

## TERRACES AT STONEBRIDGE

*Exclusively by Covington Homes - The Capri Plan 101*

Kevin Wade  
C. 719-210-4259 O. 719-448-5000 [Kevin@covingtonhomesco.com](mailto:Kevin@covingtonhomesco.com)  
[www.covingtonhomesco.com](http://www.covingtonhomesco.com)  
Model — Coming Soon

Garrett Ashcroft  
C. 719.205.6110 O. 719-448-5000 [Garrett@covingtonhomesco.com](mailto:Garrett@covingtonhomesco.com)



**TERRACES AT STONEBRIDGE**  
*The Capri, Plan 101*  
**Ranch**  
 1849-3489 finished square feet  
 3701 Total Square Feet  
 2-4 bedroom, 2.5-3.5 baths,  
 greatroom, large kitchen, covered  
 patio, 3-car garage

OPTIONAL BASEMENT



Prices, specifications and availability subject to change without notice, in a continuous effort to improve its product, Covington Homes reserves the right to make changes or modifications to plans, specifications, materials, features and colors without notice. Window and window locations may vary per exterior. All square footages are approximate and buyer is informed not to rely on estimates and should independently verify room dimensions on his/her home. rev. 1-2015.

COVINGTON HOMES

[www.covingtonhomesco.com](http://www.covingtonhomesco.com)

**TERRACES AT STONEBRIDGE**  
*The Capri, Plan 101*  
 Ranch  
 1849-3489 finished square feet  
 3701 Total Square Feet  
 2-4 bedroom, 2.5-3.5 baths,  
 greatroom, large kitchen, covered  
 patio, 3-car garage



MAIN LEVEL FLOOR



Prices, specifications and availability subject to change without notice, in a continuous effort to improve its product, Covington Homes reserves the right to make changes or modifications to plans, specifications, materials, features and colors without notice. Window and window locations may vary per exterior. All square footages are approximate and buyer is informed not to rely on estimates and should independently verify room dimensions on his/her home. rev. 1-2015.