

# COVINGTON HOMES



MEDITERRANEAN *elevation A*



SPANISH *elevation B*



RUSTIC MOUNTAIN *elevation C*

## TERRACES AT STONEBRIDGE

*Exclusively by Covington Homes - The Monaco Plan 103*

Kevin Wade

C. 719-210-4259 O. 719-448-5000 [Kevin@covingtonhomesco.com](mailto:Kevin@covingtonhomesco.com)

[www.covingtonhomesco.com](http://www.covingtonhomesco.com)

Model — Coming Soon

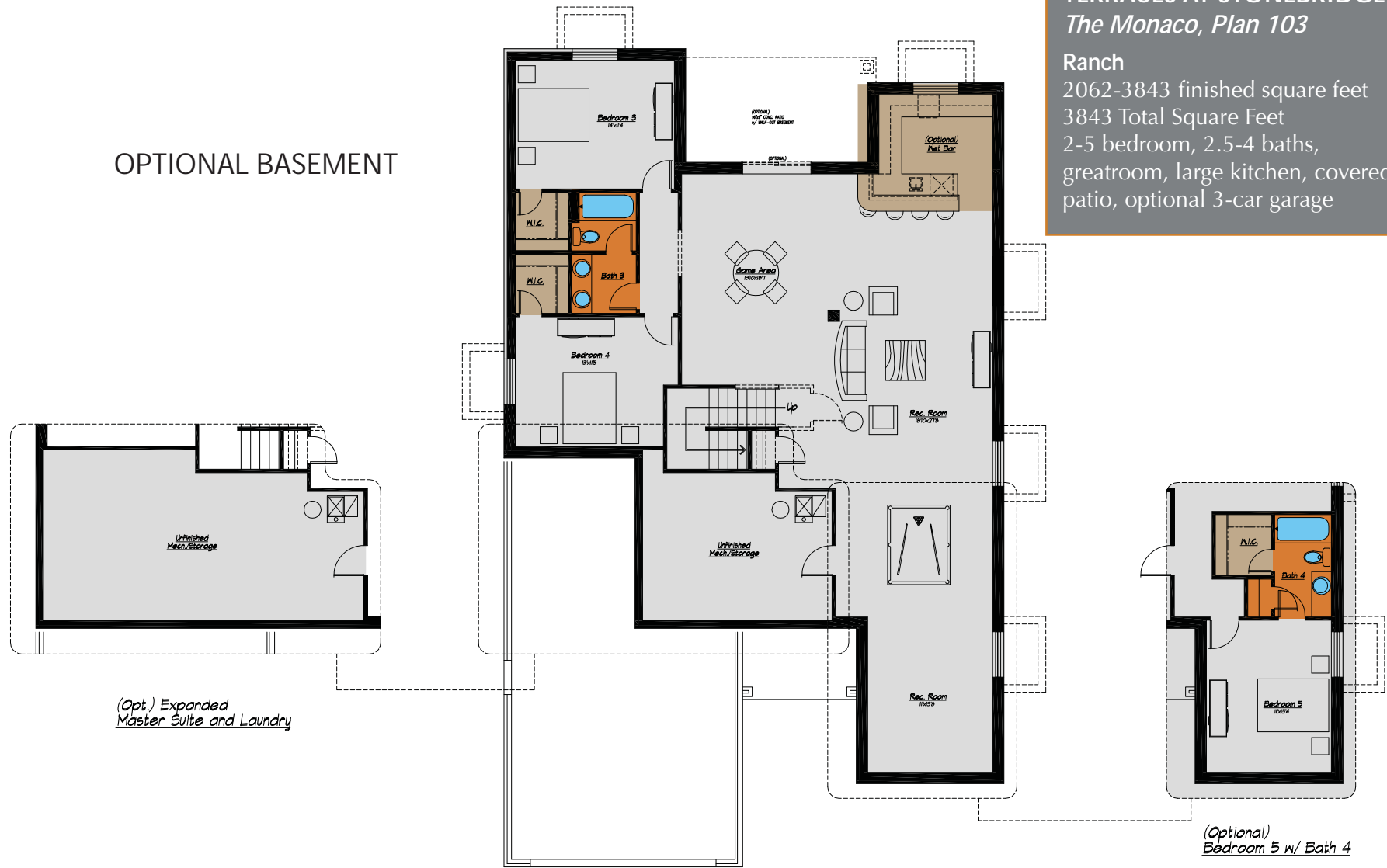
Garrett Ashcroft

C. 719.205.6110 O. 719-448-5000 [Garrett@covingtonhomesco.com](mailto:Garrett@covingtonhomesco.com)

**TERRACES AT STONEBRIDGE**  
*The Monaco, Plan 103*

**Ranch**  
 2062-3843 finished square feet  
 3843 Total Square Feet  
 2-5 bedroom, 2.5-4 baths,  
 greatroom, large kitchen, covered  
 patio, optional 3-car garage

**OPTIONAL BASEMENT**

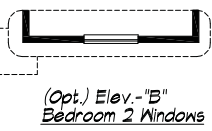
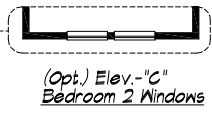
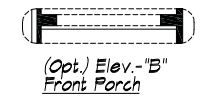
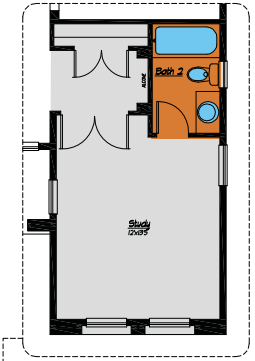
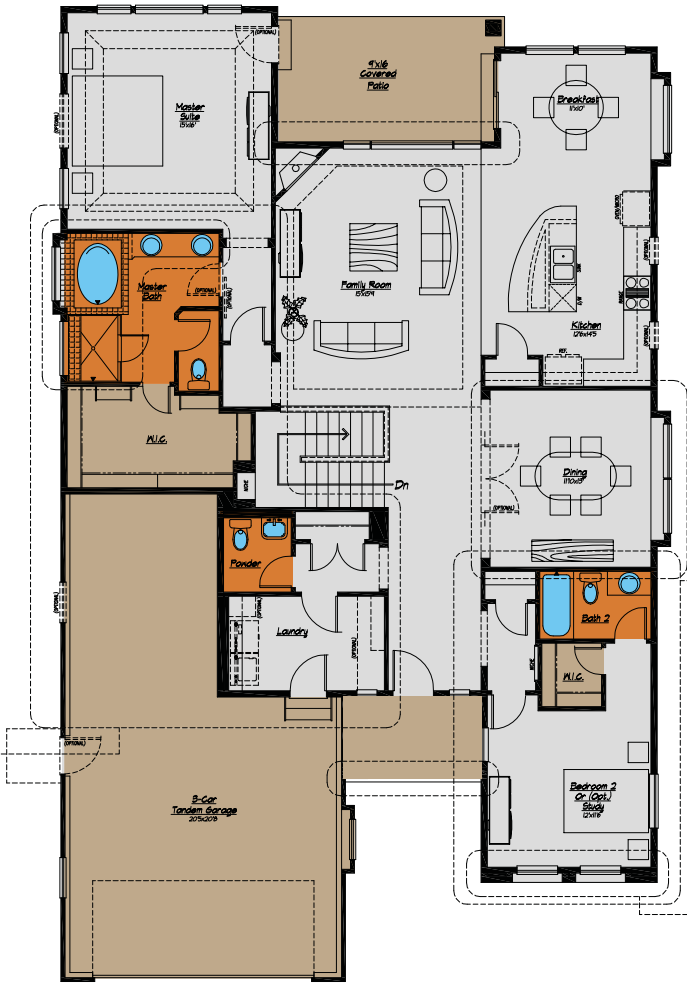
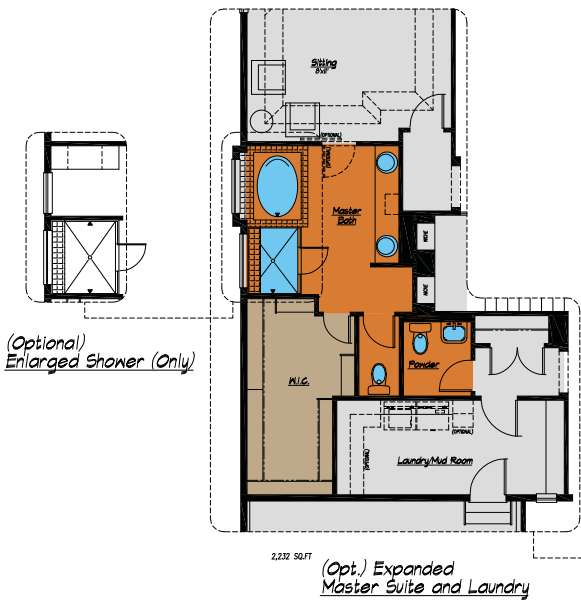
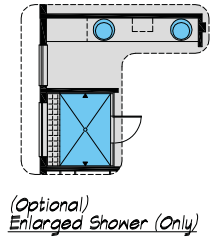


*(Opt.) Expanded  
 Master Suite and Laundry*

*(Optional)  
 Bedroom 5 w/ Bath 4*



Prices, specifications and availability subject to change without notice, in a continuous effort to improve its product, Covington Homes reserves the right to make changes or modifications to plans, specifications, materials, features and colors without notice. Window and window locations may vary per exterior. All square footages are approximate and buyer is informed not to rely on estimates and should independently verify room dimensions on his/her home. rev. 1-2015.



MAIN LEVEL FLOOR

**TERRACES AT STONEBRIDGE**  
*The Monaco, Plan 103*

Ranch  
 2062-3843 finished square feet  
 3843 Total Square Feet  
 2-5 bedroom, 2.5-4 baths,  
 greatroom, large kitchen, covered  
 patio, optional 3-car garage

Prices, specifications and availability subject to change without notice, in a continuous effort to improve its product, Covington Homes reserves the right to make changes or modifications to plans, specifications, materials, features and colors without notice. Window and window locations may vary per exterior. All square footages are approximate and buyer is informed not to rely on estimates and should independently verify room dimensions on his/her home. rev. 1-2015.

